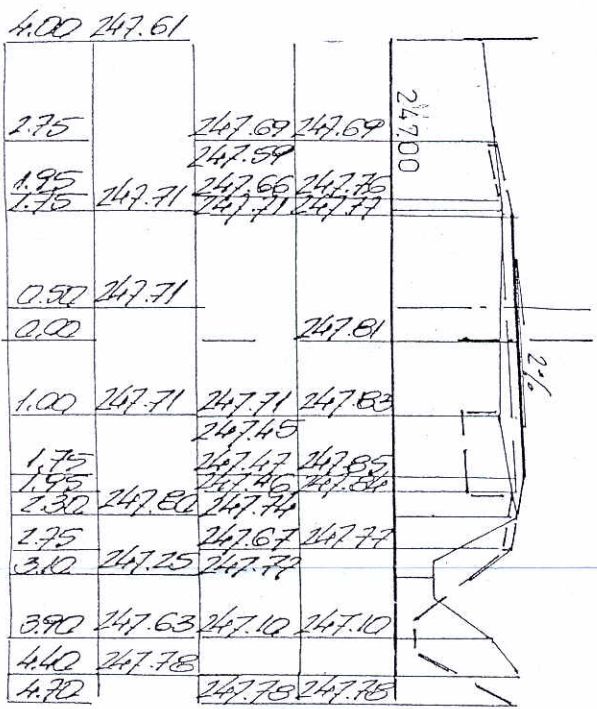
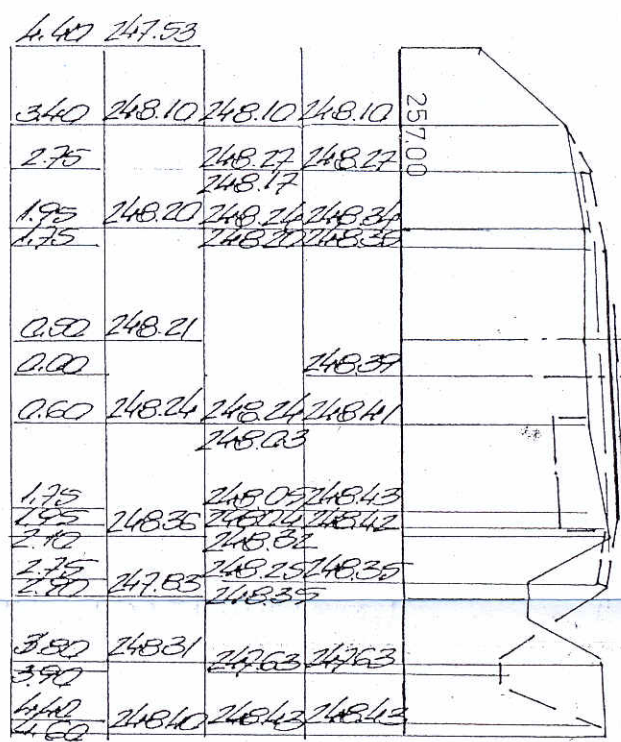


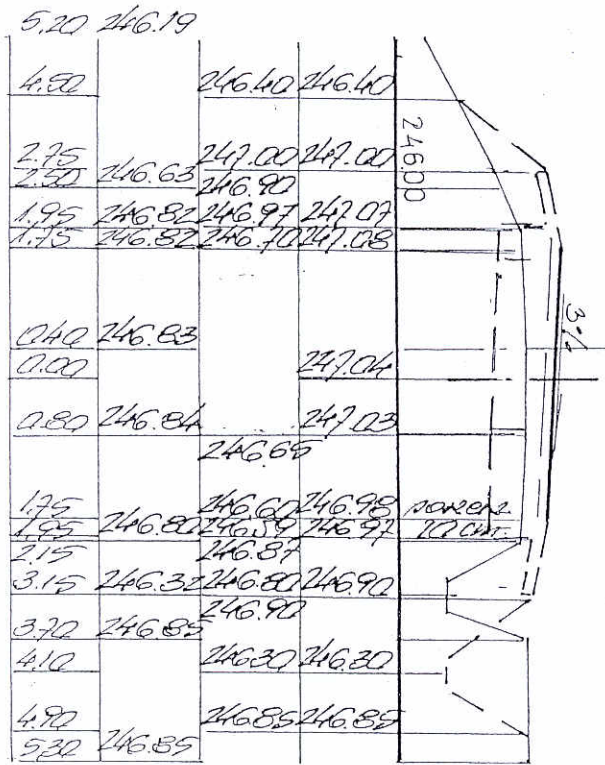
3.22



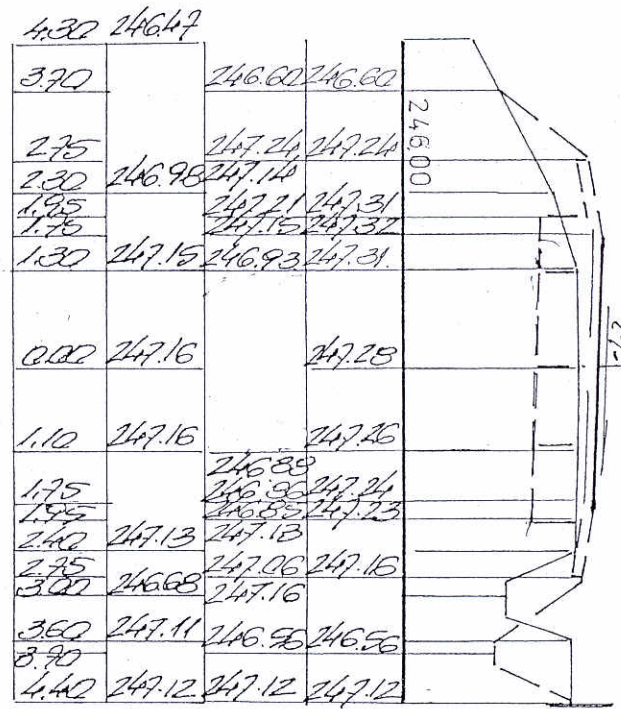
Km 0 + 820,0
W = 0,38 N = 0,26



Km 0 + 780,0
W = 1,03 N = 0,40

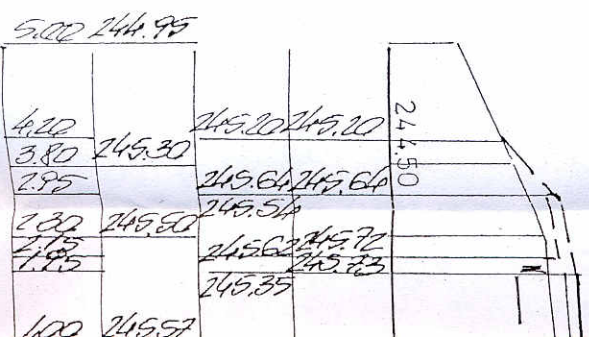


Km 0 + 920,0
W = 1,27 N = 0,99

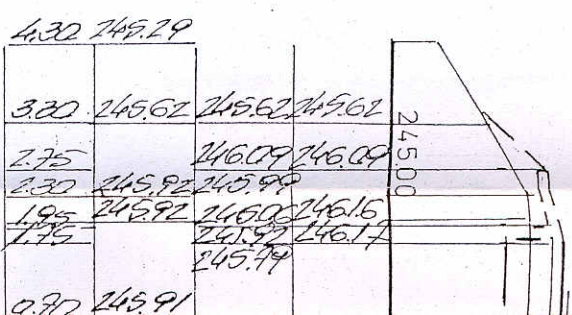


Km 0 + 880,0
W = 1,29 N = 0,48

Na odcinku od km 0 + 850,0
- korytowanie i podbudowa



Km 1
W = 0



Km 1
W = 1,48

